

# OPERATING INSTRUCTION

## SHINETOO LIGHTING USA LLC

Add: 1263B Rand RD, Des Plaines, IL, 60016 USA  
T: +1-(224)567-8070 +1-(224)567-8312 M: (847)899-1678  
Email: [lucy@stledlights.com](mailto:lucy@stledlights.com)

## JIAXING SHINETOO LIGHTING CO., LTD (CHINA FACTORY)

Add: No. 258 Xinchang Road, Xincheng Town, Xiuzhou District,  
Jiaxing City, Zhejiang Province, China  
Tel: +86-573-8350-0001 Fax: +86-573-8350-0005  
Mobile: +86-138-0961-6725/+86-138-1878-3129  
Email: [lucy@stledlights.com](mailto:lucy@stledlights.com)



# ELECTRICIANS MUST READ PRIOR TO INSTALLATION



## - WARNING: RISK OF ELECTRIC SHOCK

- Product must be installed by licensed electrician.
- Product designed for Industrial purpose only.
- Disconnect or turn off power before and during installation.
- Verify that supply voltage is same as rated luminaire voltage.



## - WARNING: RISK OF ELECTRIC INJURY

- Wear gloves and safety glasses at all times whilst handling the luminaire.
- Avoid direct eye exposure to the light source while it is on.



## - WARNING: RISK OF BURN

- Avoid touching any external surface of the luminaire when in use.
- Allow the luminaire to cool before handling.
- Follow all manufacturer's warnings, recommendations and restrictions.



## - CAUTION: RISK OF FIRE

- Keep combustible materials away from luminaire.
- Do not operate in close proximity to persons, combustible materials or substances affected by heat.
- Building insulation must not cover this luminaire.



## - CAUTION: RISK OF PRODUCT DAMAGE

- Remove protective film on reflector lens and luminaire.
- If the external flexible cable or plug of the luminaire is damaged, return to manufacturer for repair or replacement.
- Ensure the product is not exposed to heat, chemicals or sharp objects.
- If the product is damaged, contact the supplier for maintenance or replacement to avoid hazards.
- Do not mount or support luminaire in a manner that can cut the outer sheath or damage wire insulation.
- Only use the luminaire in its intended location.



## - ELECTROSTATIC DISCHARGE (ESD):

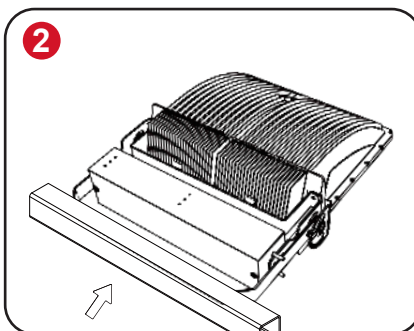
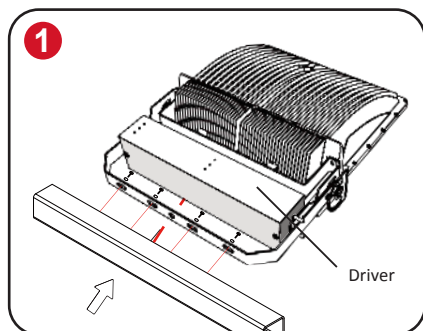
- ESD can damage LED fixtures. Personal grounding equipment must be worn during.

## ★ DISCLAIMERS

This product must be installed and used as per these instructions  
This product is not suitable for installation in hazardous and/or corrosive areas  
This product has been designed to operate in ambient temperatures: -30 °C to 50 °C

## INSTALLATION INSTRUCTIONS

★ (NO ADAPTER / WITH DRIVER)



### STEP 1:

Put the lamp on the lamp pole and put in the nut. See ①.

### STEP 2:

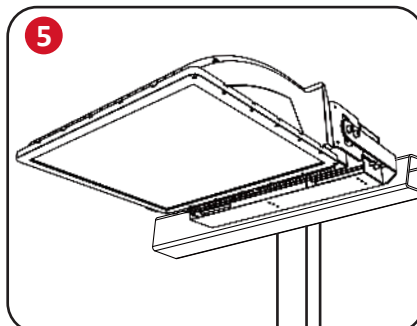
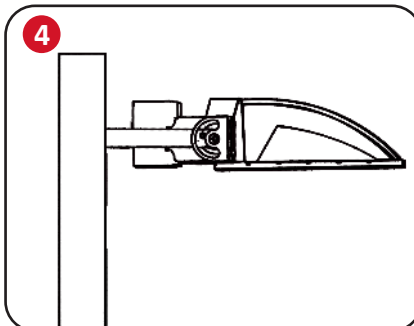
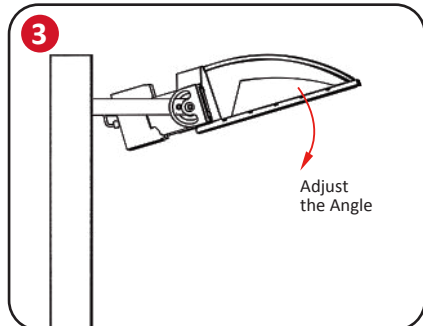
Fix the lamp and tighten the nut. See ②.

### STEP 3:

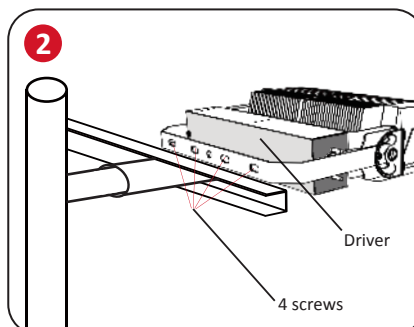
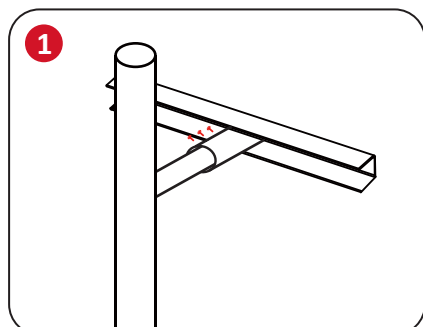
Install junction boxes and connect wires. See ③.

### STEP 4:

Adjust the Angle of lamps and lanterns. See ④ ⑤.



★ (WITH ADAPTER / WITH DRIVER)



### STEP 1:

The wire goes through the adapter, and then the adapter is installed on the lamp holder See ①.

### STEP 2:

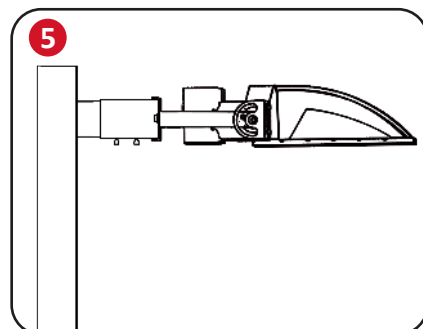
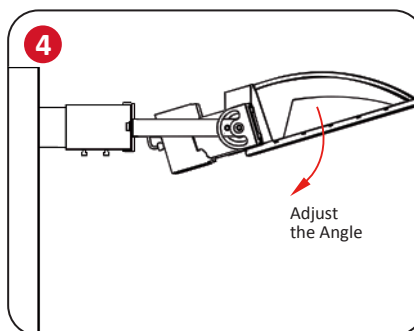
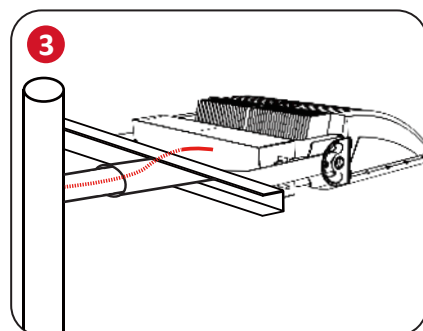
wire goes through the lamp handle, then install the lamp at the turning joint See ②.

### STEP 3:

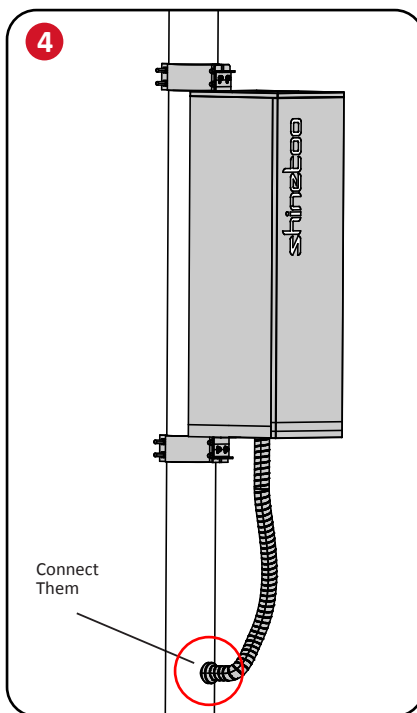
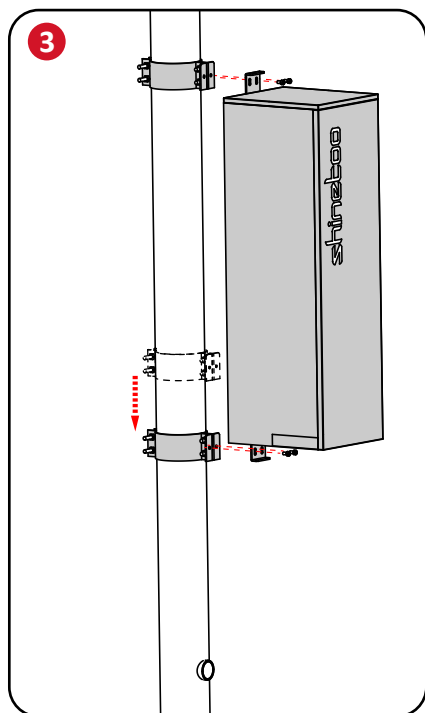
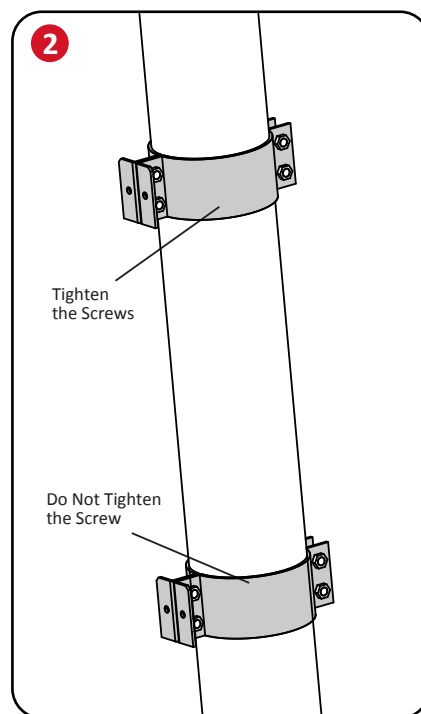
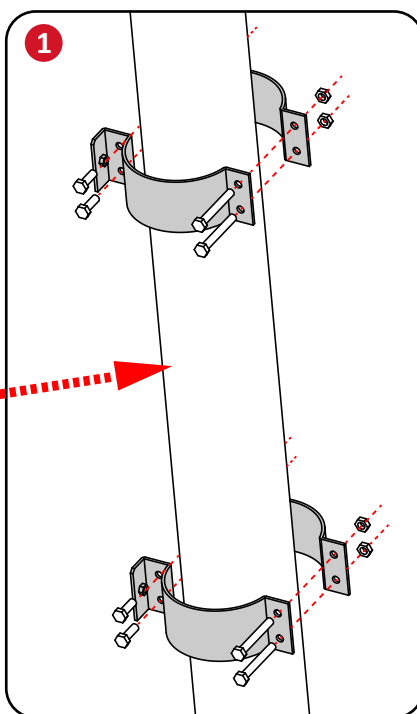
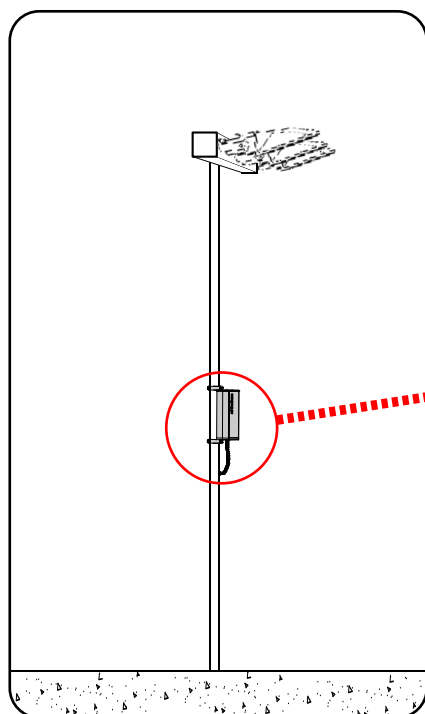
Connect the wire to the junction box. See ③.

### STEP 4:

Adjust the lamp to a proper Angle. See ④ ⑤.



## DRIVER BOX INSTALLATION - FIRST OPTION



### STEP 1:

Fix the upper accessories on the light pole with your hands, as shown in the picture. See ①.

### STEP 2:

After fitting properly, tighten the screw, and install the lower part of the screw as the upper part. See ②.  
(note: do not tighten the lower part of the screw)

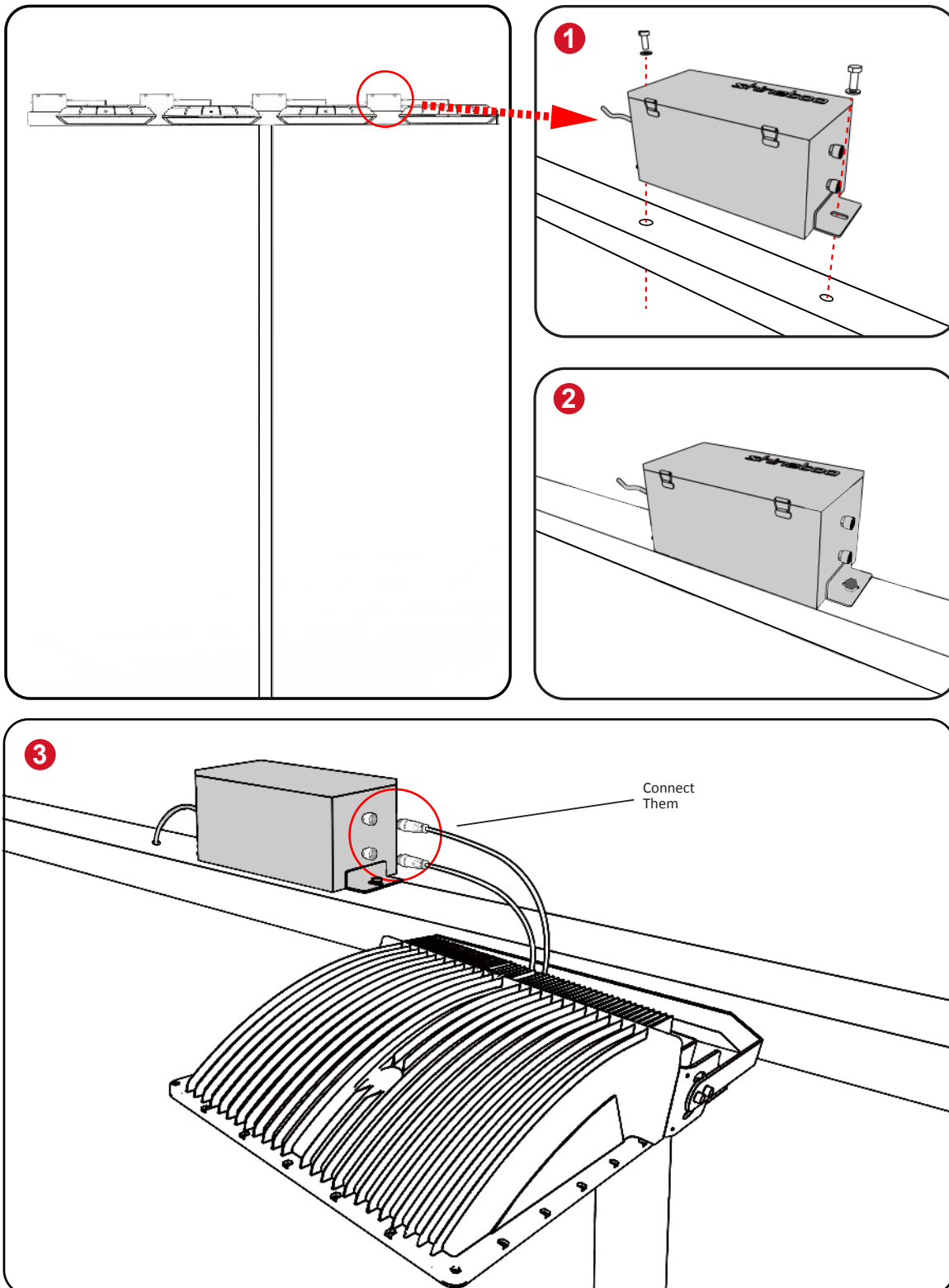
### STEP 3:

Place the driver box at the interface end of the accessories. First fix the driver box and the accessories at the upper end and tighten the screws. Then adjust the position of the lower part of the accessories. When corresponding to the position of the driver box, fix the lower part of the power box on the top and tighten the screws. See ③.

### STEP 4:

Connect the driver cord to the lamp cord. See ④.

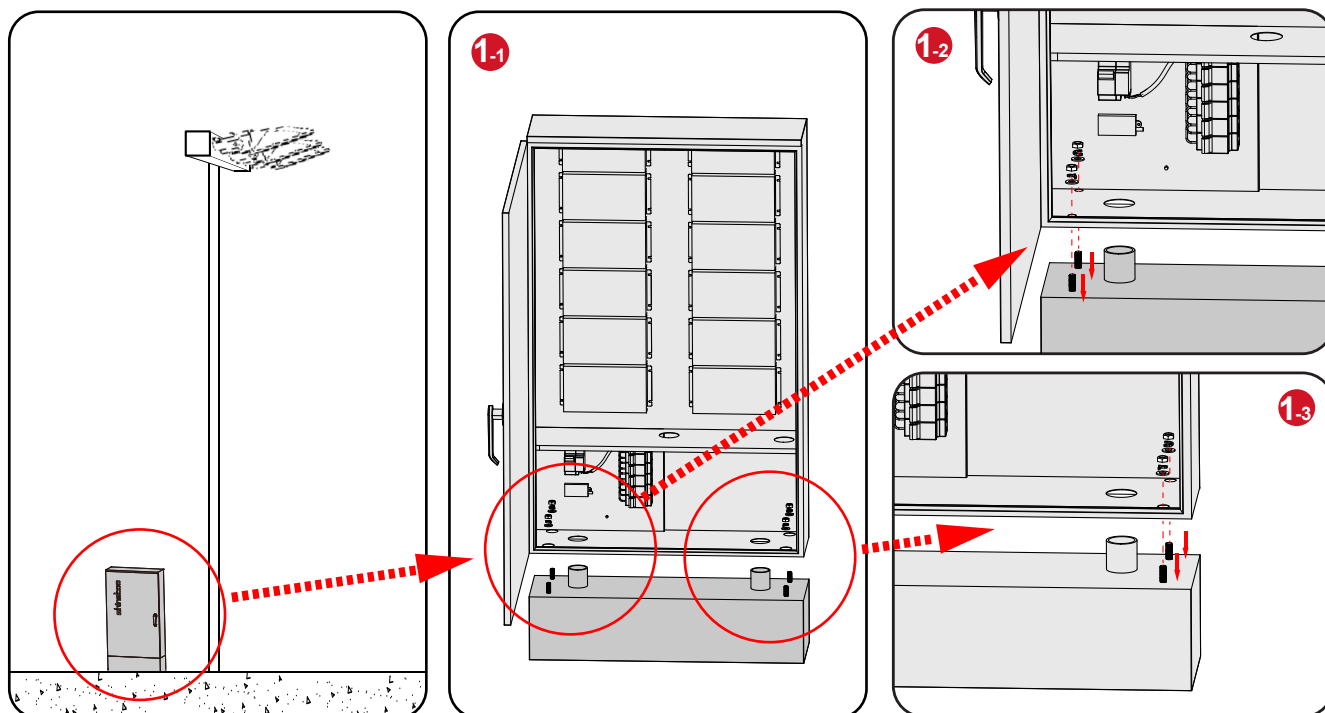
## DRIVER BOX INSTALLATION - SECOND OPTION



**STEP 1:**  
Place the driver box on the light pole and tighten the screws. See ❶❷.

**STEP 2:**  
Connect the lamp cable to the driver box. See ❸.

## DRIVER BOX INSTALLATION - FIRST OPTION



### STEP 1:

First hammer the nails into the cement, then place the driver box on the concrete board and screw it in place. See 1-1 1-2 1-3.

### STEP 2:

Connect the lines according to the styles provided in figure 2.  
(note: do not tighten the lower part of the screw) See 2.

